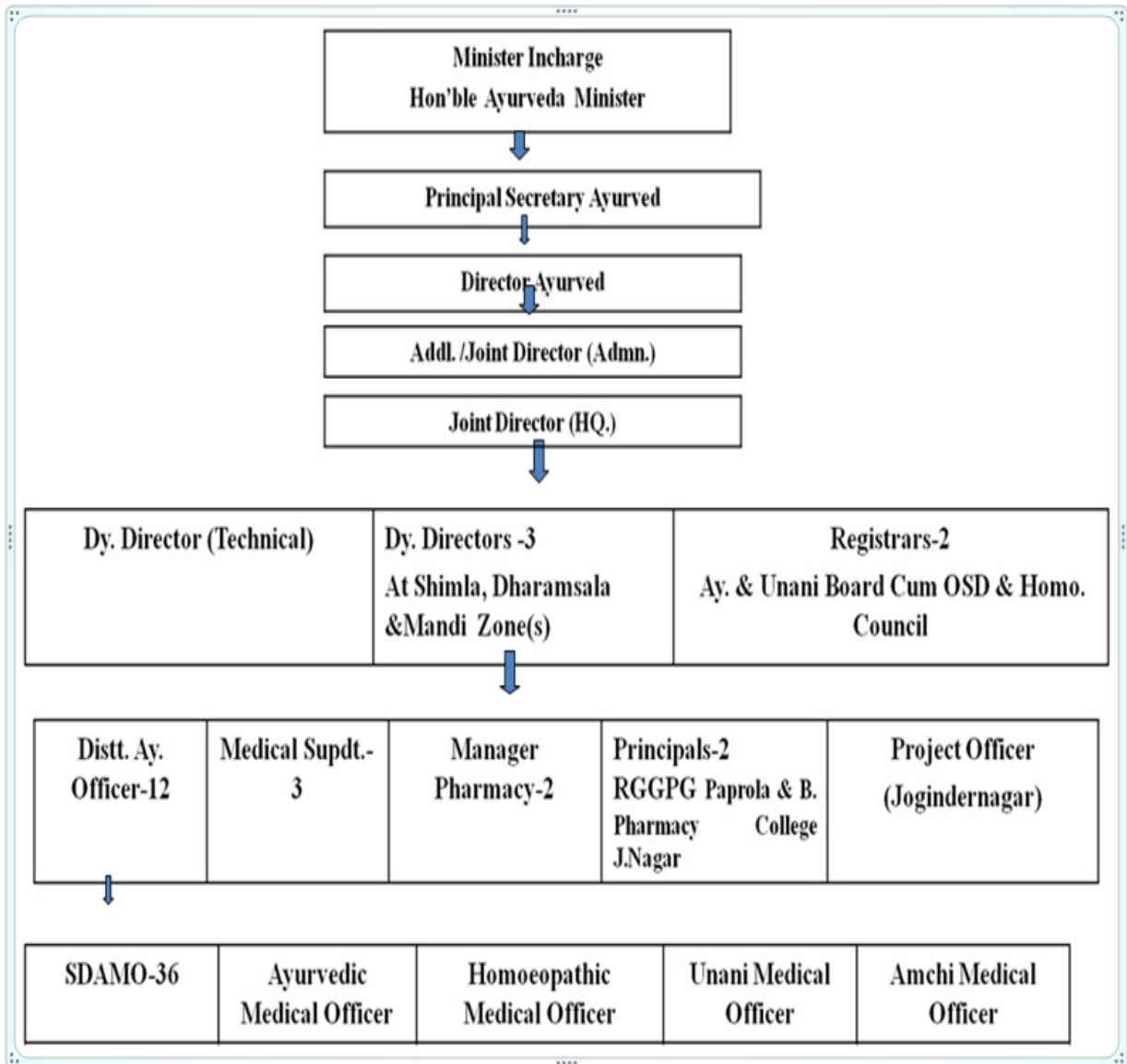


District Wise Health Centres:

Sr. No	Name of District	Systems					Total Number of Centres
		Ay. Hospital	Ayurveda	Homo.	Unani	Amchi	
1	Bilaspur	2	67	2	-	-	71
2	Chamba	2	103	2	-	-	107
3	Hamirpur	5	68	1	-	-	74
4	Kangra	7	227	1	1	-	236
5	Kinnaur	1	27	1	-	2	31
6	Kullu	2	64	1	-	-	67
7	Lahaul & Spiti	1	21	1	-	2	25
8	Mandi	2	164	1	-	-	167
9	Shimla	3	149	1	1	-	154
10	Sirmour	1	78	1	-	-	80
11	Solan	2	76	1	1	-	80
12	Una	4	68	1	-	-	73
		32	1112	14	3	4	1165

Introduction

Sr. No	Details of Institution (s)	Numbers	
		In the year 1984	In the year 2016
1	Ayurvedic Dispensaries	424	1112
2	Unani Dispensaries	3	3
3	Homoeopathic Dispensaries	2	14
4	Amchi Clinics	-	4
5	Ayurveda Hospital	12	32
6	Govt. Ayurvedic College	1 Under Graduate Ayurvedic College	1 Post Graduate Ayurvedic College
7	Research Institute	1	1
8	Govt. Ayurvedic Pharmacies	2	3
9	Drug Testing Lab	-	1
10	Panchkarma Centres	-	17
11	Herbal Gardens	-	4



Department of Indian System of Medicines & Homoeopathy Himachal Pradesh
Staff Position

Sr. No	Designation	Sanctioned	Filled Up	Vacant
1	Director	1	1	-
	Joint Director Administration	1	1	-
	Joint Director Headquarter	1	-	1
	Deputy Director	3	2	1
	Deputy Director Technical	1	-	1
	Manager Ayurvedic Pharmacy	3	-	3
	Medical Superintendent	3	3	-
	District Ayurvedic Officer	12	11	1
	Sub Divisional Ay. Medical Officer	36	32	4
	Sr. Ay. Chikitsak (Specialist)	22	10	12
	Radiologist	1	-	1
	Anesthetist	1	-	1
	Project Officer	1	-	1
	Pharmaceutical Chemist	1	-	1
	Herbarium In -charge	1	-	1
	Supdt. Gr-I	5	5	-
	Private Secretary	1	1	-
	Ayurvedic Medical Officer	1159	802	357
	Homo. Medical Officer	14	14	-
	Unani Medical Officer	3	1	2
	Amchi Chikitsak	4	1	3
	Principal	1	1	-
	Professor	10	6	4
	Reader	25	22	3
	Sr. Lecturer	15	15	-
	Lecturer	12	8	4
	Section Officer	3	1	2
	Superintendent Grade-II	23	23	-
	Senior Assistant	45	44	1
	Junior Assistant/ Clerk	103	80	23
	Personal Assistant	1	1	-
	Senior Stenographer	1	1	-
	Junior Stenographer	1	1	-

	Steno Typist	4	1	3
	Ayurvedic Pharmacist	1178	643	535
	Homoeopathic Compounder	14	11	3
	Amchi Pharmacist	4	-	4
	Staff Nurse	58	45	13
	Ward sister	4	3	1
	ANMs	194	158	36
	Dais	404	404	Dying Cadre
	Laboratory Technicians	39	13	26
	Physiotherapist	1		1
	Laboratory Attendant	18	14	4
	Mechanic	3	1	2
	Yoga Instructor	1	-	1
	Artists	1	1	-
	Assistant Librarian	1	1	-
	Electrician	1	1	-
	Plumber	1	1	-
	Operation Theatre Assistant	2	1	1
	Radiographer	1	1	-
	Dark Room Assistant	1	-	1
	Assistant Botanist	1	-	1
	Scientific Assistant	2	2	-
	Laboratory Assistant (Research)	2	1	1
	Laboratory Assistant	2	-	2
	Driver	19	15	4
	Class-IV	1087	987	100
	Sweeper	129	129	Dying Cadre
	Daily Wager		417	

Help Line

Minister in charge Ayurveda Minister HP	0177-2625117
Secretary Ayurveda H.P.	0177- 2621871
Director Ayurveda	0177-2622262 Fax - 2622010
Joint Director Ayurveda	Telefax 0177- 2623978
District Ayurvedic Office Bilaspur	01978-222486
District Ayurvedic Office Chamba	01899-222669
District Ayurvedic Office Hamirpur	01972-222539
District Ayurvedic Office Dharmashala	01892-223202
District Ayurvedic Office Kinnaur	01786-222209
District Ayurvedic Office Kullu	01902-222637
District Ayurvedic Office Lahaul Spiti	01900-222271
District Ayurvedic Office Mandi	01905-223362
District Ayurvedic Office Shimla	0177-2622101
District Ayurvedic Office Sirmaur	01702-222567
District Ayurvedic Office Solan	01792-228438
District Ayurvedic Office Una	01975-226011
Principal Rajiv Gandhi Govt. Post Graduate Ay. College Paprola	01894-242064
Medical Superintendent Regional Ay. Hospital Paprola	01894-242941
Medical Superintendent Regional Ay. Hospital Chotta Shimla	0177-2621753
Manager Govt. Ayurvedic Pharmacy Joginder Nagar Mandi	01908-222048
Manager Govt. Ayurvedic Pharmacy Majra Sirmaur	01704-255122
Research Institute in ISM Joginder Nagar	01908-222970
Incharge Drug Testing Laboratory Joginder Nagar Mandi	01908-222092
Incharge Pharmacy Training Centre Joginder Nagar Mandi	01908-222931

Health Care Services

Sr. No	Name of Hospital	No. Of Beds	Telephone No.
1	Regional Ayurvedic Hospital Shimla	50	0177-2621753
2	Regional Ayurvedic Hospital Paprola	215	01894-242941
3	District Ayurvedic Hospital Kangra	20	01892-225182
4	District Ayurvedic Hospital Hamirpur	50	01972-224194
5	District Ayurvedic Hospital Una	30	01975-224002
6	District Ayurvedic Hospital Chamba	20	01899-222038
7	District Ayurvedic Hospital Bilaspur	10	01978-224031
8	District Ayurvedic Hospital Nahan	20	07108-224450
9	District Ayurvedic Hospital Kelyong	10	-
10	District Ayurvedic Hospital Mandi	10	-
11	District Ayurvedic Hospital Reckong Peo	20	01786-222917
12	Circle Ayurvedic Hospital Katrain	10	01902240630
13	Circle Ayurvedic Hospital Joginder Nagar	10	01908-222602
14	District Ayurvedic Hospital Dehra	10	01970-233872
15	Nature Care Hospital Una	10	-
16	Ayurvedic Hospital Nalagarh	10	01975-222571
17	Ayurvedic Hospital Bharmour	10	-
18	Ayurvedic Hospital Rohru Shimla	10	-
19	Ayurvedic Hospital Ispur Una	10	-
20	Ayurvedic Hospital Halderkona Kangra	10	-
21	Ayurvedic Hospital Harsar Kangra	10	-
22	Ayurvedic Hospital Kandaur	10	01978-243102
23	Ayurvedic Hospital Kaadihyaar	10	-
24	Shri Jain Muni Ayurvedic Hospital Manvi Hamirpur	20	-
25	Ayurvedic Hospital Rampur	10	01782-234944
26	Ayurvedic Hospital Sulyaali	10	-
27	Ayurvedic Hospital Solan	20	-
28	Ayurvedic Hospital Kullu	20	-
29	Ayurvedic Hospital Lamblu	10	-
30	Ayurvedic Hospital JOh Una	10	-
31	Ayurvedic Hospital Bijrhi Hamirpur	10	-
32	Ayurvedic Hospital Majethali Kangra	10	-